

Real Photo Postcards

Tewksbury, Massachusetts

1898 - 1920



Tewksbury Historical Society
Michael P. Kelley

Real Photo Postcards Tewksbury, Massachusetts

1898-1920



Tewksbury Historical Society
Michael P. Kelley

Copyright 2005
Tewksbury Historical Society
Michael P. Kelley

Tewksbury Historical Society
Tewksbury, Massachusetts
United States of America

www.tewksburyhistoricalsociety.org
All rights reserved.

In the years immediately following 1898 a few Tewksbury residents roamed our small town photographing people, homes, streets and businesses. These pictures would end up on special postcard stock and then sold at places like Fairgrieve's General Store in Tewksbury Center as well as the State Infirmary Waiting Room, once located near the intersection of Chandler and East Streets.

During this period photo postcards came into wild popularity throughout both the United States and Europe. The huge demand was exploited by Eastman-Kodak who in 1902 developed an affordable "Folding Pocket" camera. This innovation allowed the general public to easily take photographs and then have them developed directly onto black and white postcard stock, often tinted with attractive sepia browns or cyanotype blues.

The postcard craze continued until WW1 when it experienced a sharp decline due to rising import tariffs and a shortage of raw materials. The availability of the telephone is also cited as contributing to the decline.

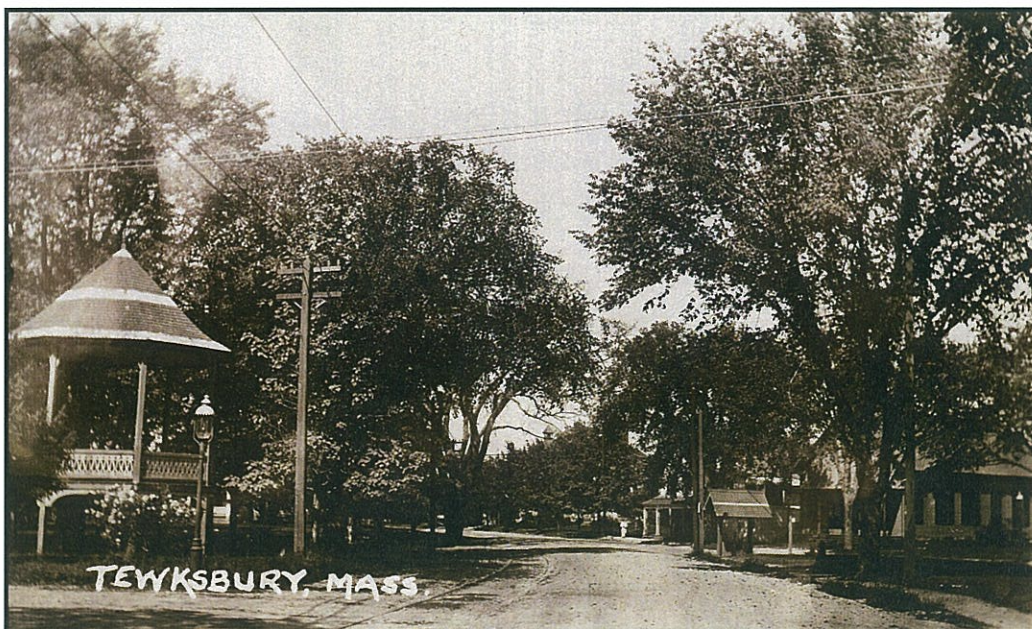
The majority of real photo postcards depicted in this book often passed the last century buried in far away attics. The average real photo postcard needed to survive a hundred years of solitude, immediately followed by a few private sales or public auctions until they would find their way back to Tewksbury.

That being said, it was only through the kindness and generosity of other Tewksbury postcard collectors such as Karen Bourdelais, Dennis Sireen and Jerry Steele that I was able to create this diverse photographic retrospective.

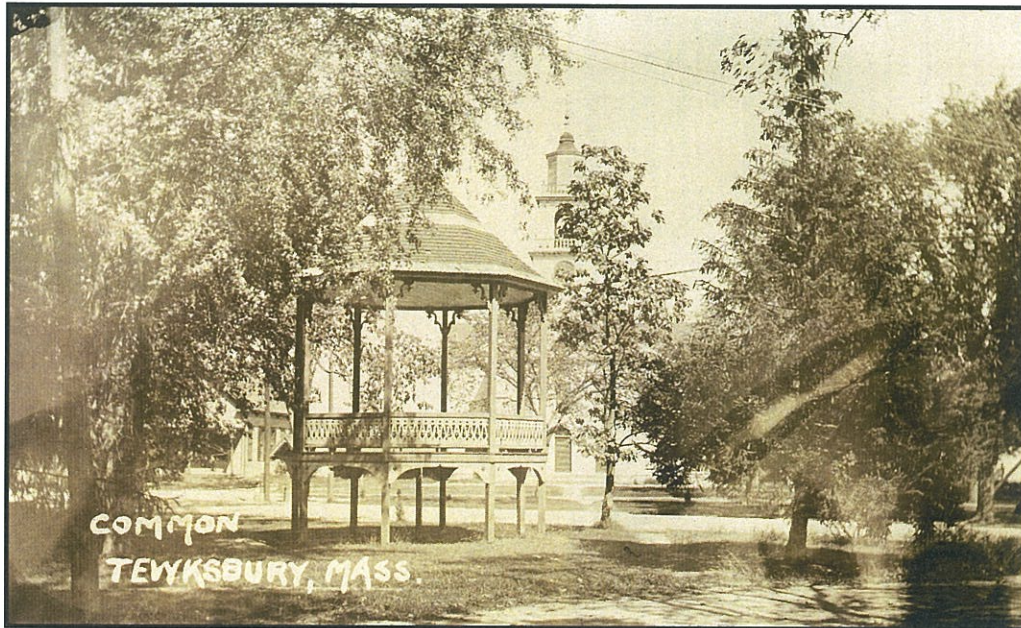
Michael P. Kelley
Tewksbury Historical Society
December, 2005



Tewksbury Center at the intersection of East and Main Streets, circa 1910.



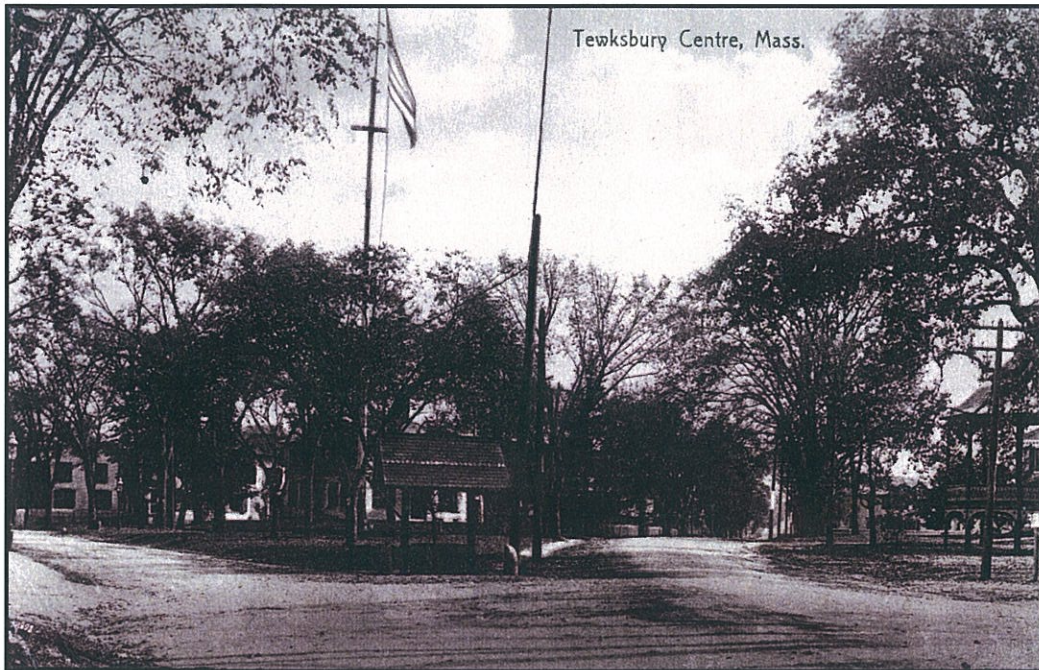
Tewksbury Center looking north along Main Street, circa 1909.



Town Common, circa 1909.



A view along East Street taken directly in front of the Congregational Church, circa 1915.



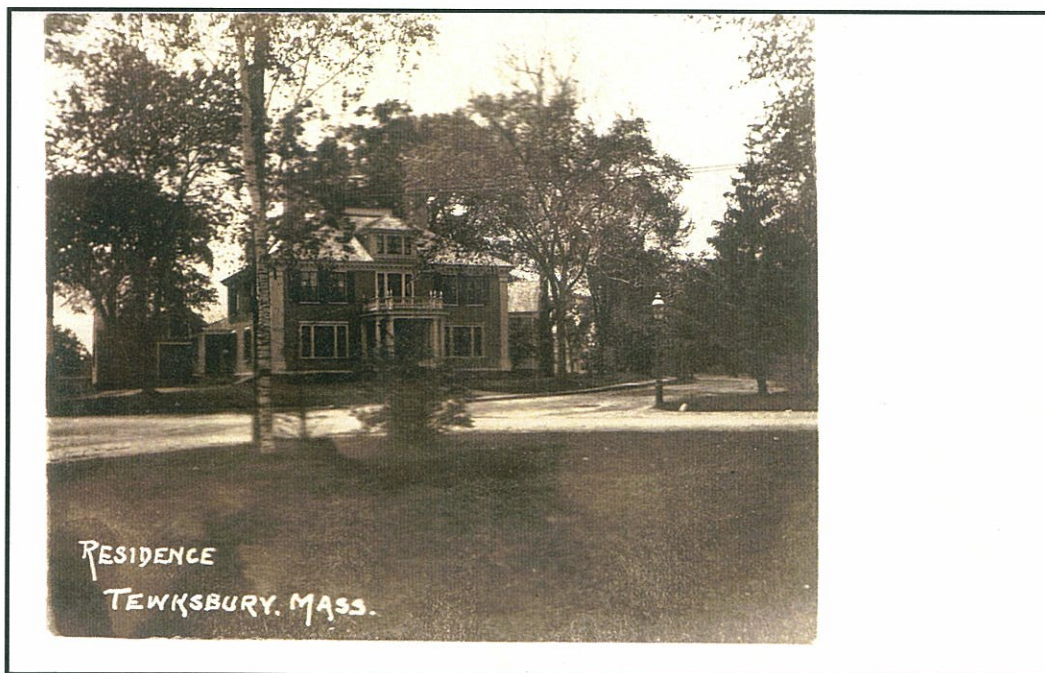
Intersection of East and Main Streets, printed in Germany, circa 1913.



The Rev. Jacob Coggin Homestead (Sycamore Hall) located at the corner of Pleasant and Main Streets, circa 1920.



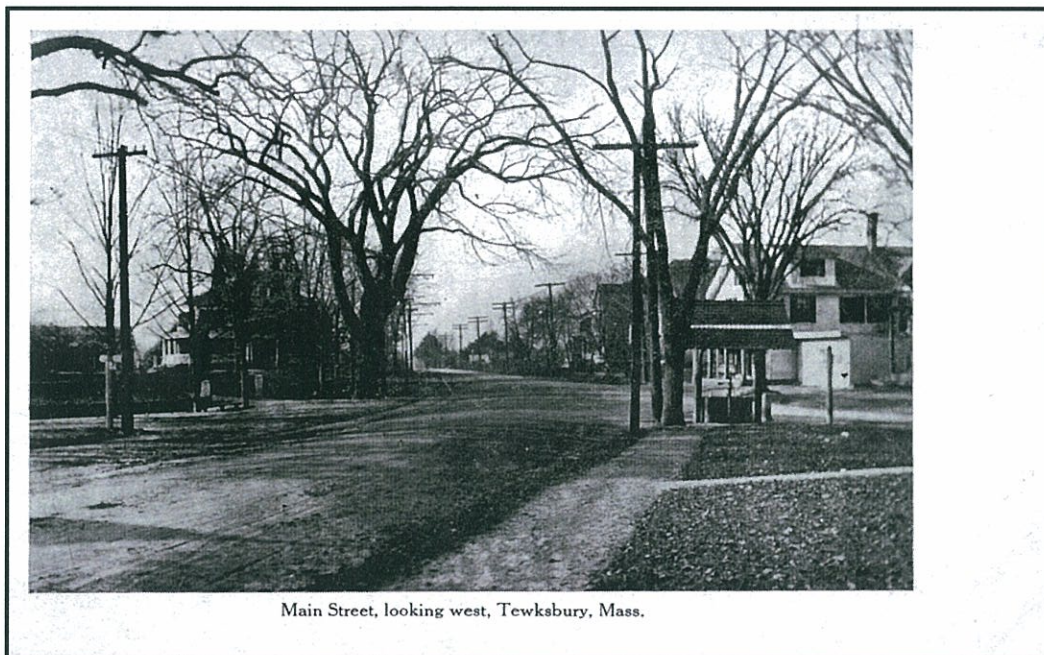
Left to right: Fairgrieve's General Store, Tewksbury Town Hall, Congregational Church, circa 1906.



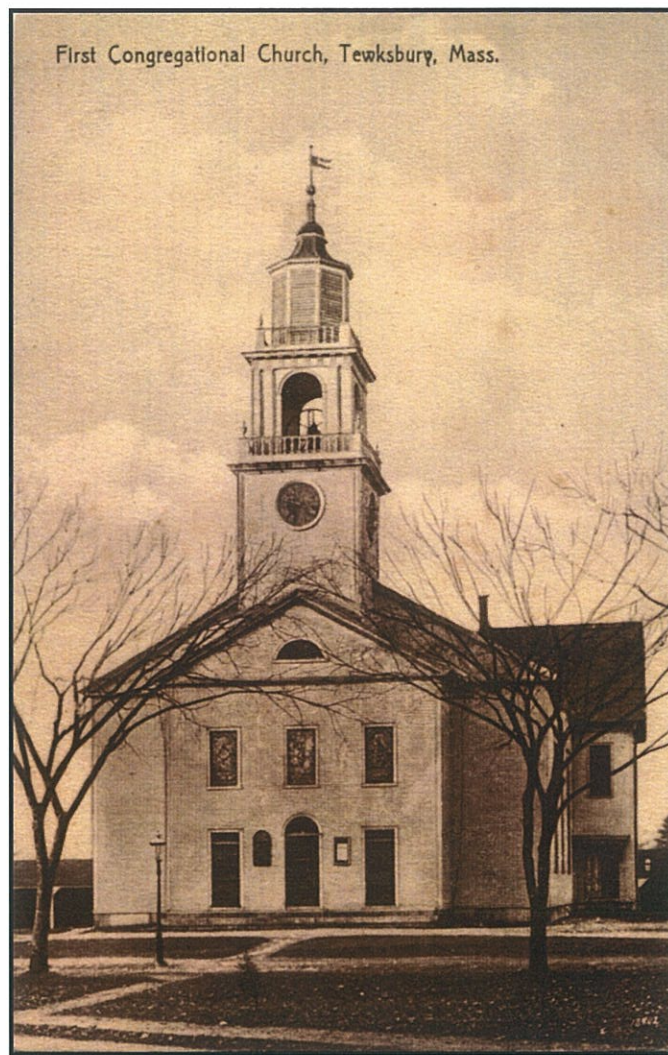
The Rev. Jacob Coggin Homestead at the intersection of Main and Pleasant Streets, circa 1907.



The intersection of North and East Streets looking towards Tewksbury Center, circa 1906.



Main Street at Tewksbury Center looking north towards Brown's Tavern, circa 1913.



A wonderful sepia postcard of the Congregational Church, printed in Germany circa 1913.

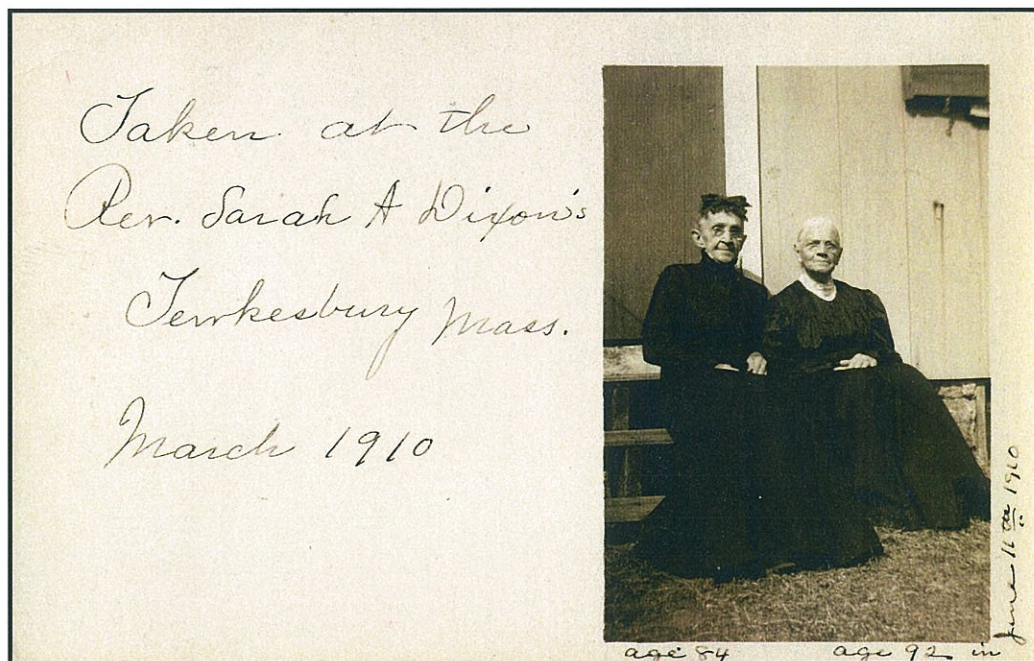
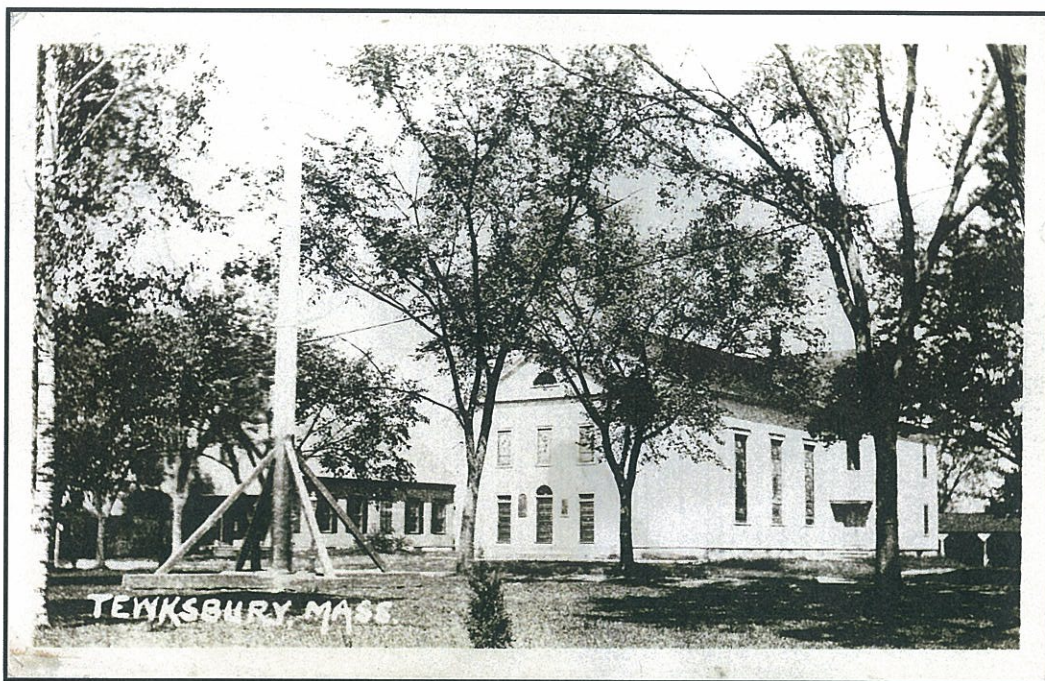


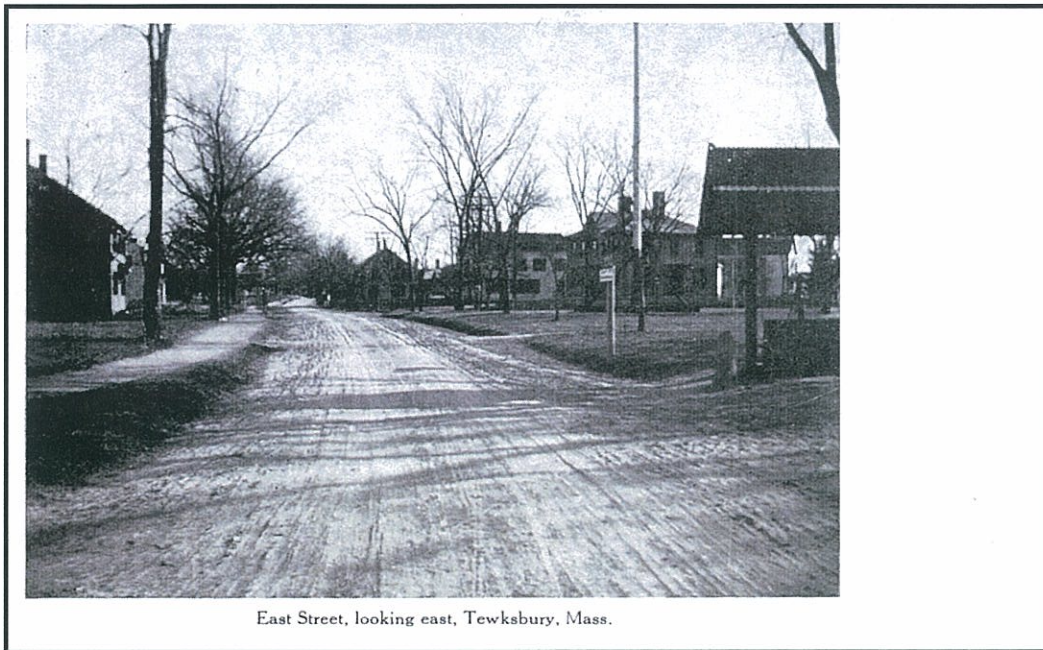
Image taken at the Rev. Sarah Dixon's home adjacent to the Congregational Church, circa 1910.



Another view of Tewksbury Center, circa 1911.



The postcard negative was reversed, incorrectly showing the Town Hall to the right, circa 1905.



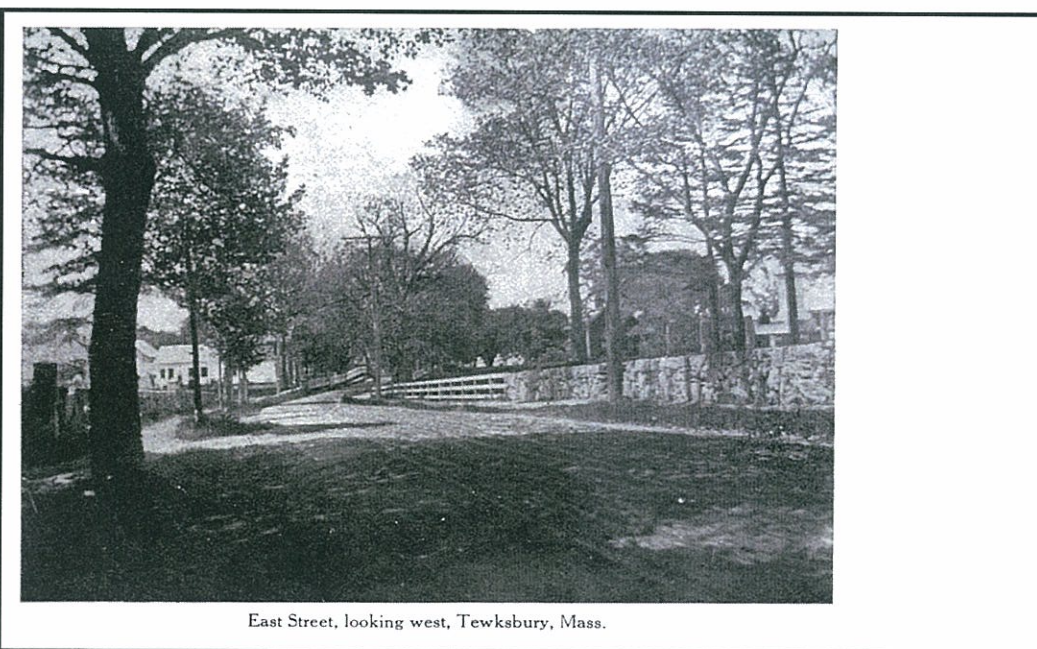
Another view along East Street taken from Tewksbury Center, circa 1913.



A view across Tewksbury Common, circa 1905.



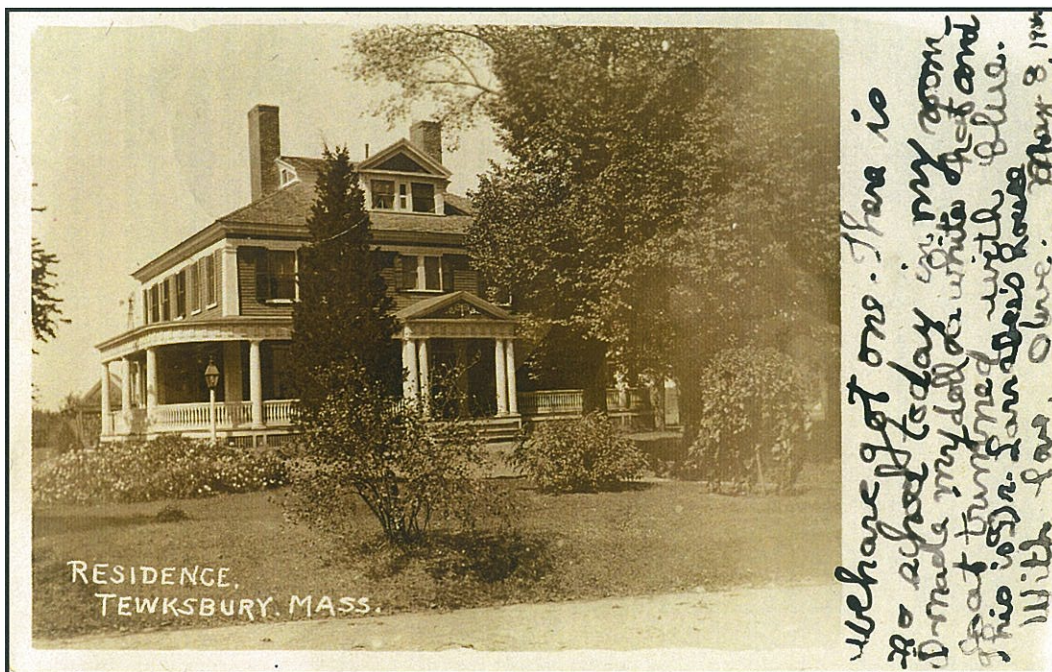
The Spaulding Homestead on East Street, circa 1908.



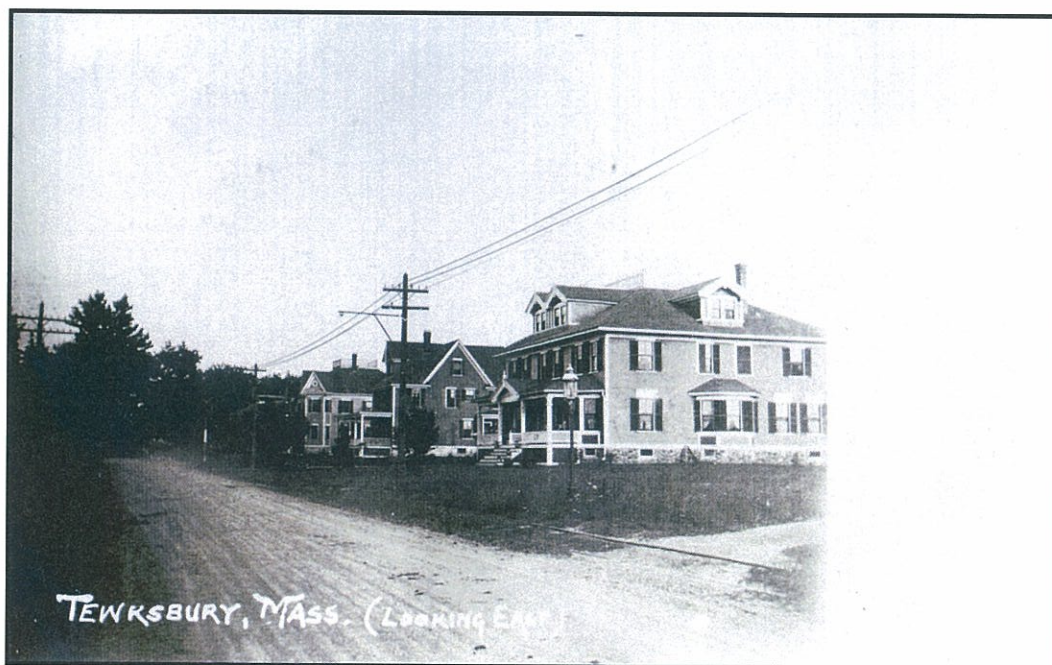
East Street at the Tewksbury Cemetery looking towards Tewksbury Center, circa 1913.



The Lee home at the corner of Lee and East Streets. Postcard sent by owner Harriette Lee, circa 1908.



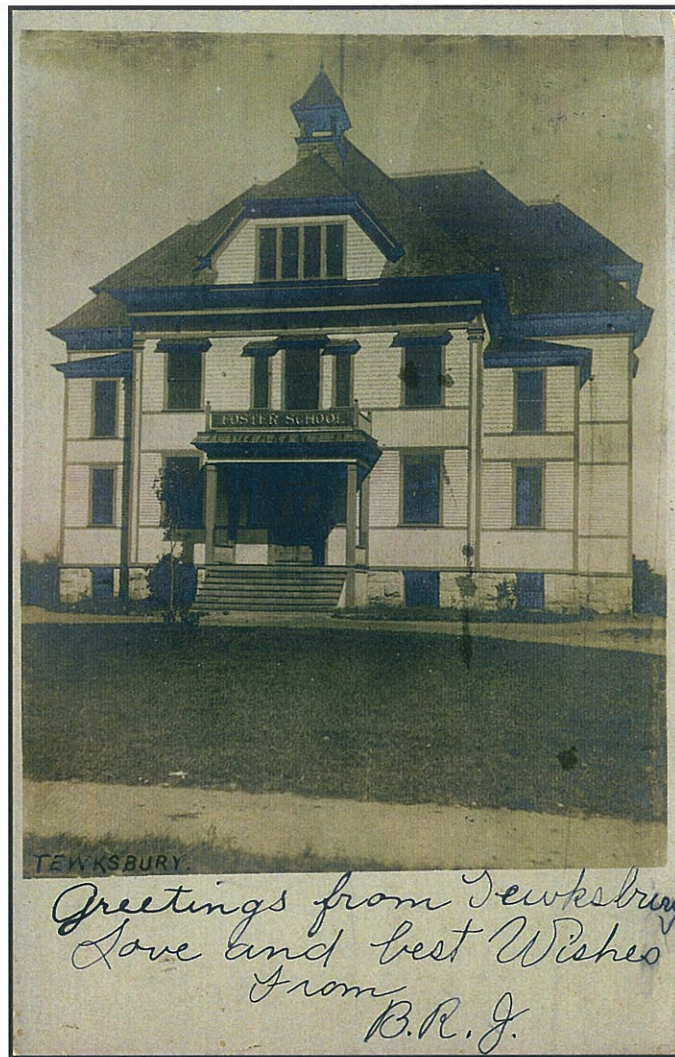
Brown's Tavern on Main Street just north of Tewksbury Center, circa 1908.



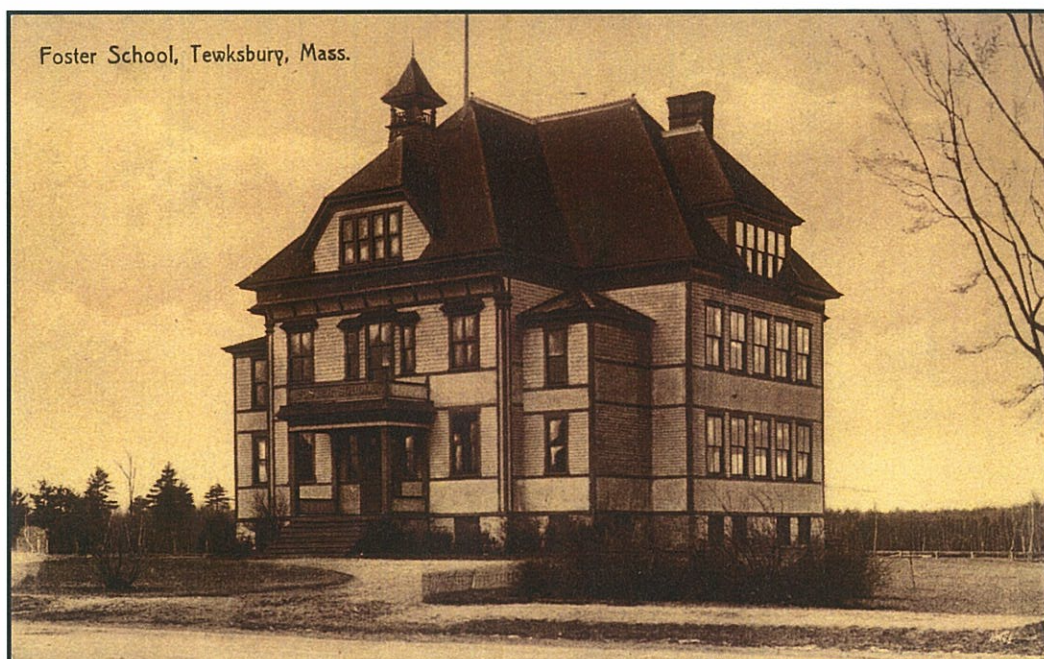
Main Street at the intersection of Summer Street looking towards Tewksbury Center, circa 1906.



The Foster School on Main Street just north of Tewksbury Center, circa 1906.



Another view of the Foster School, circa 1906.



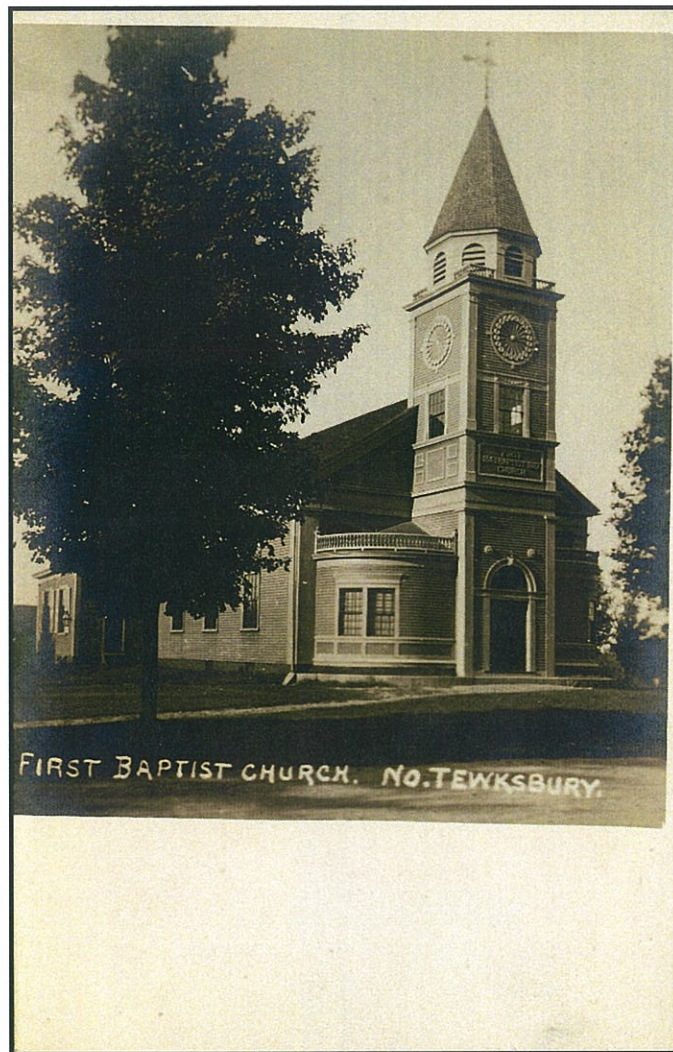
A nice sepia image of the Foster School, printed in Germany, circa 1913.



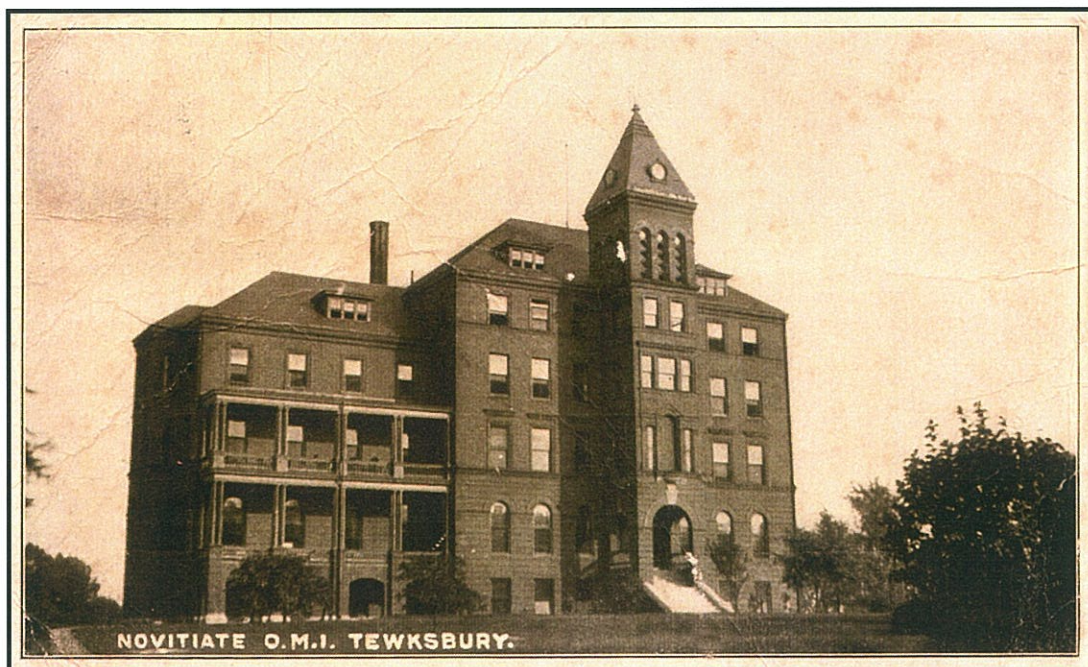
This trolley trestle over the B&M Railroad was in Wamesit along Main Street, circa 1907.



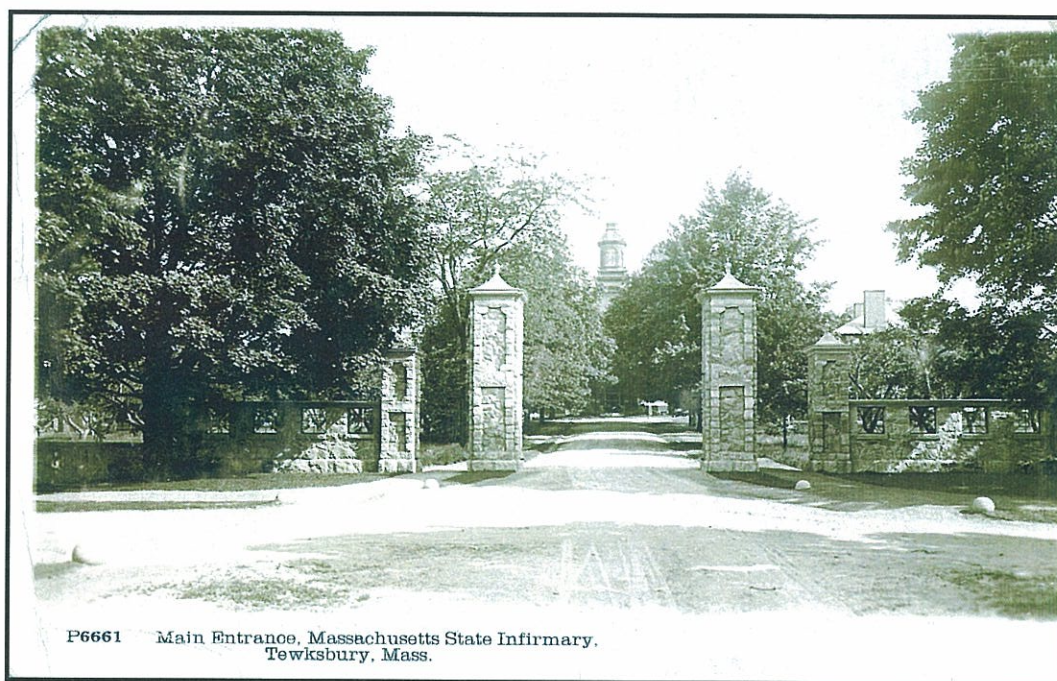
Boston and Northern Trolley tracks visible in the foreground of this Foster School postcard, circa 1908.



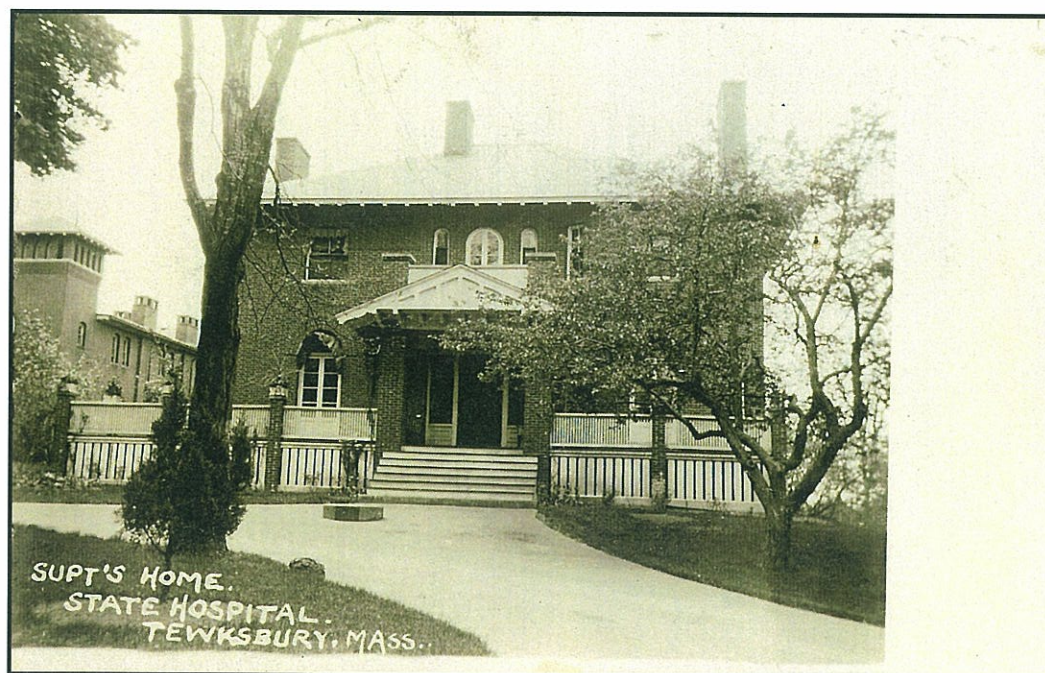
The First Baptist Church at the corner of Fiske and Andover Streets in North Tewksbury, circa 1908.



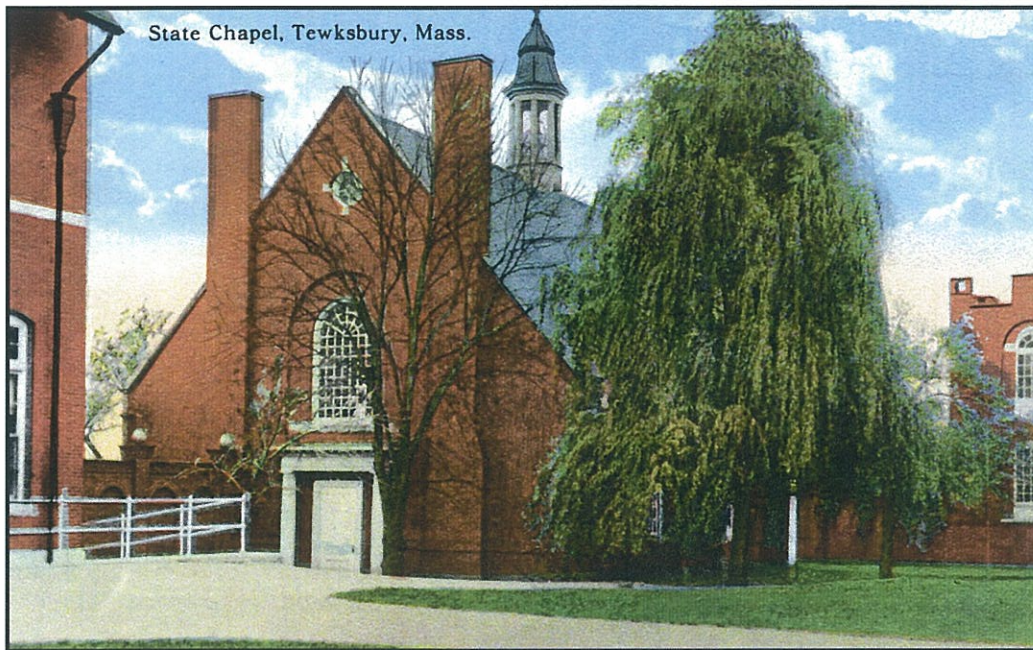
The first O.M.I. Novitiate located off Chandler Street, circa 1913.



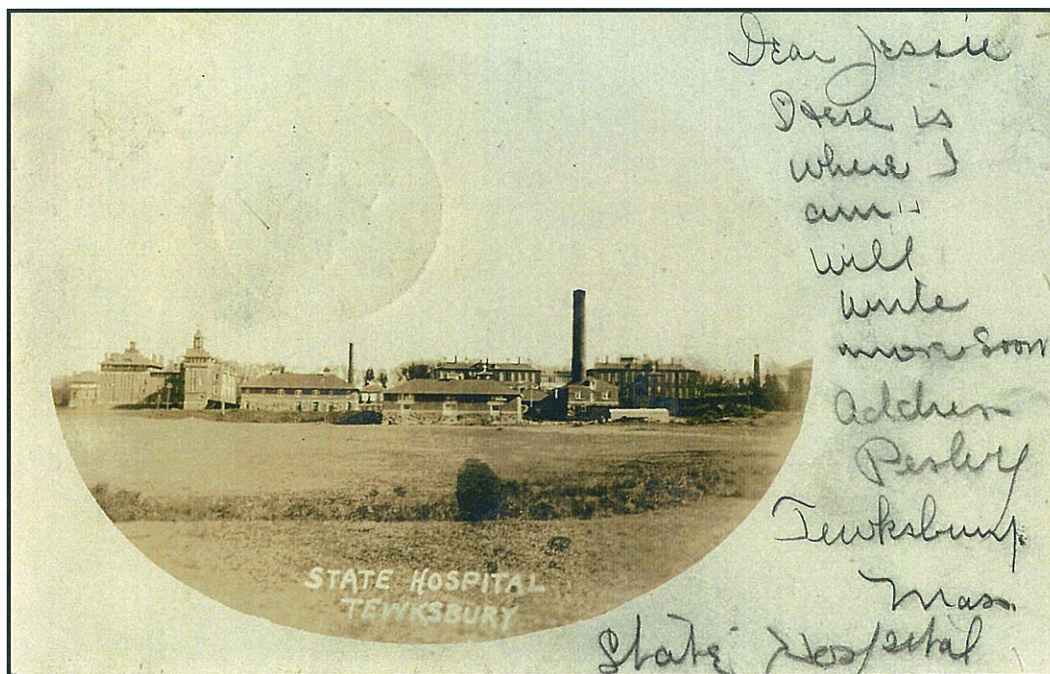
The main entrance to the State Infirmary along East Street, circa 1913.



A home just inside the main entrance of the State Infirmary, circa 1908.



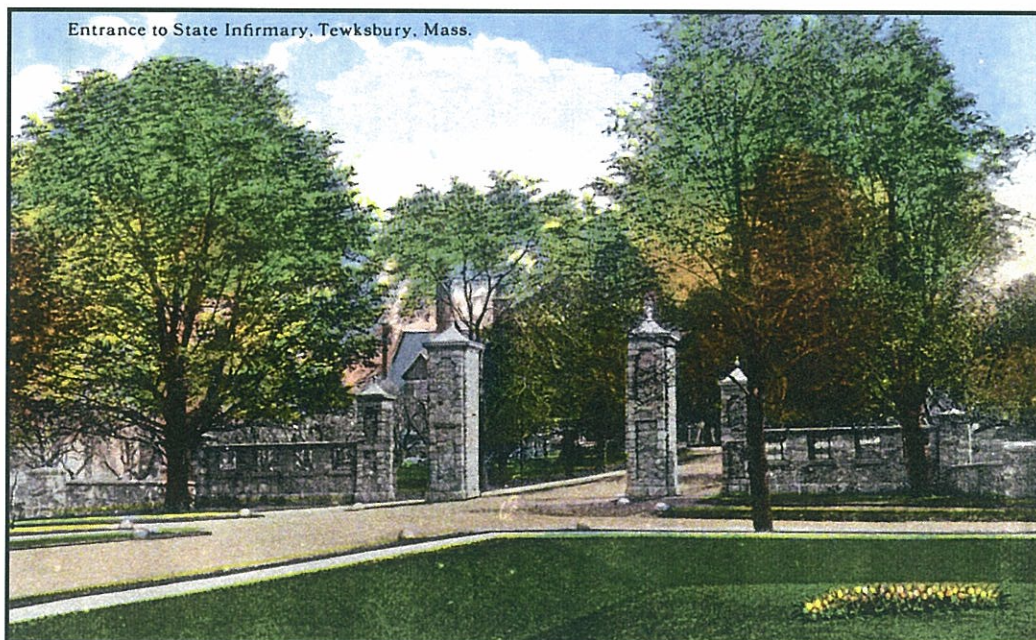
A Chapel on the grounds of the State Infirmary, circa 1914.



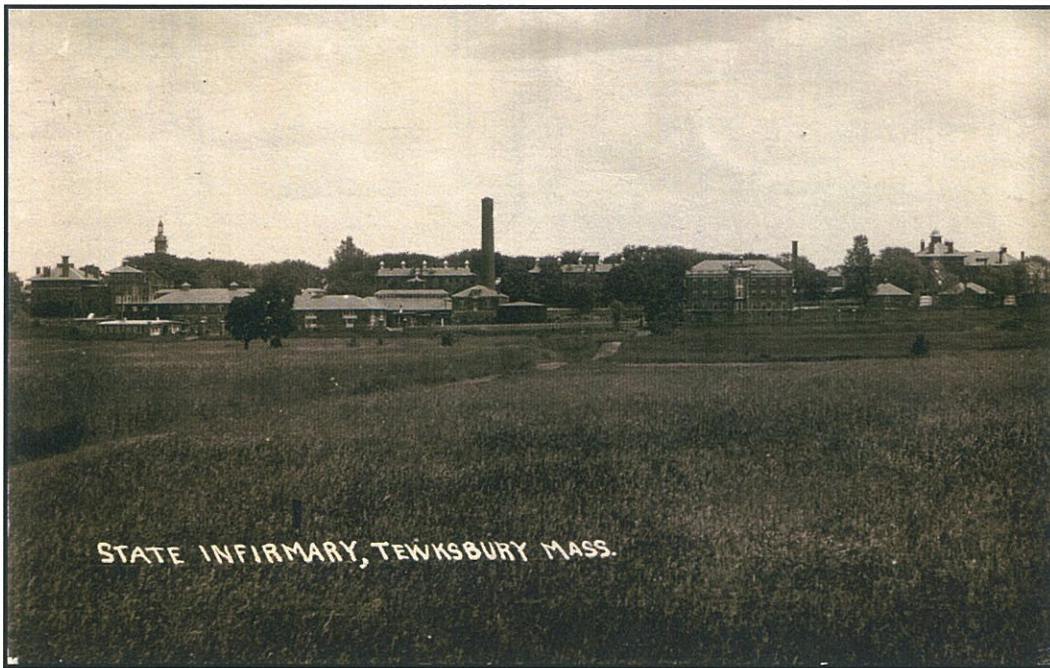
Looking east towards the State Infirmary, circa 1908.



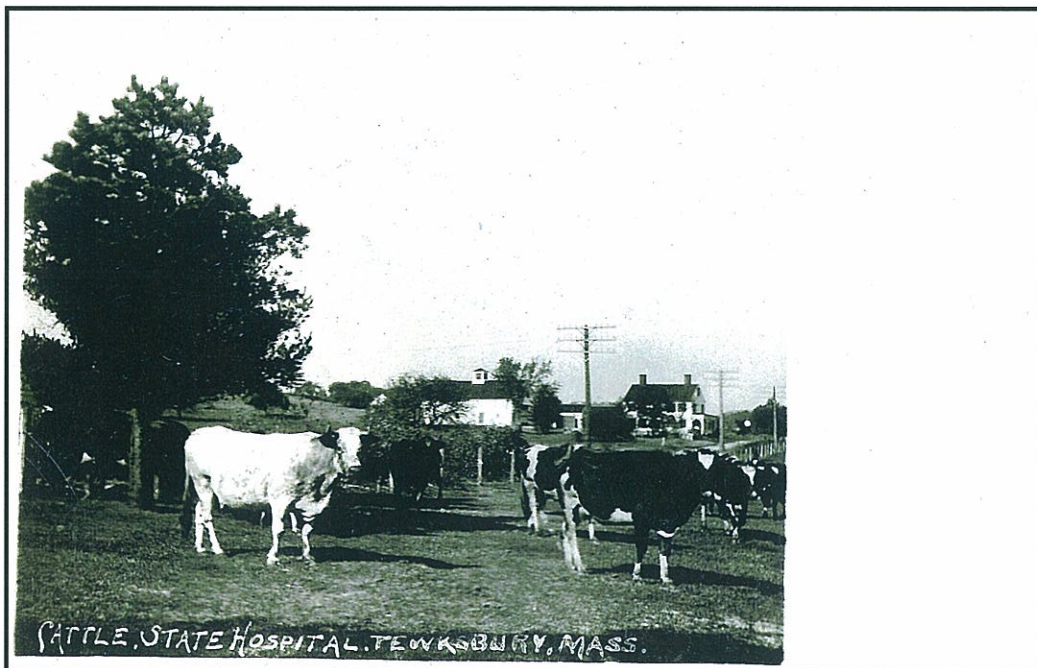
A fountain on the campus of the State Infirmary, circa 1908.



The main entrance to the State Infirmary on East Street, circa 1914.



Another view looking east towards the State Infirmary, circa 1914.



Homestead on Livingston Street, barn is located near present day public gardens, circa 1908.



State Infirmary Waiting Room at the intersection of East and Chandler Streets, circa 1914.



A view of the State Infirmary campus, circa 1907.



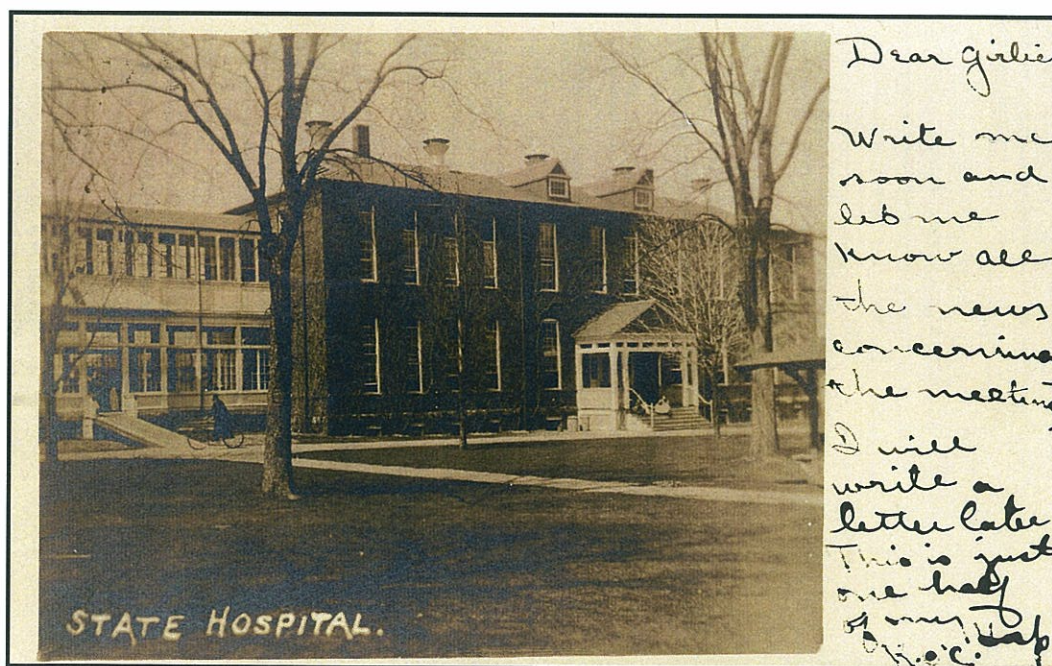
Children's Hospital at the State Infirmary, circa 1914.



East Ward at the State Infirmary, circa 1914.



Asylum 4 at the State Infirmary, circa 1906.



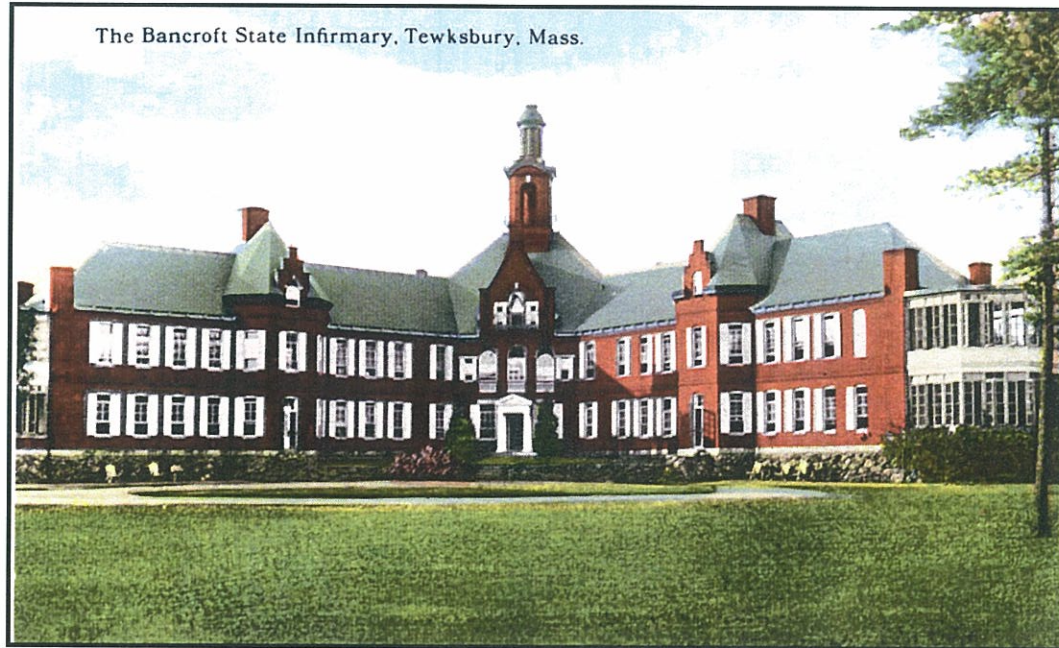
Another view of the State Infirmary campus, circa 1907.



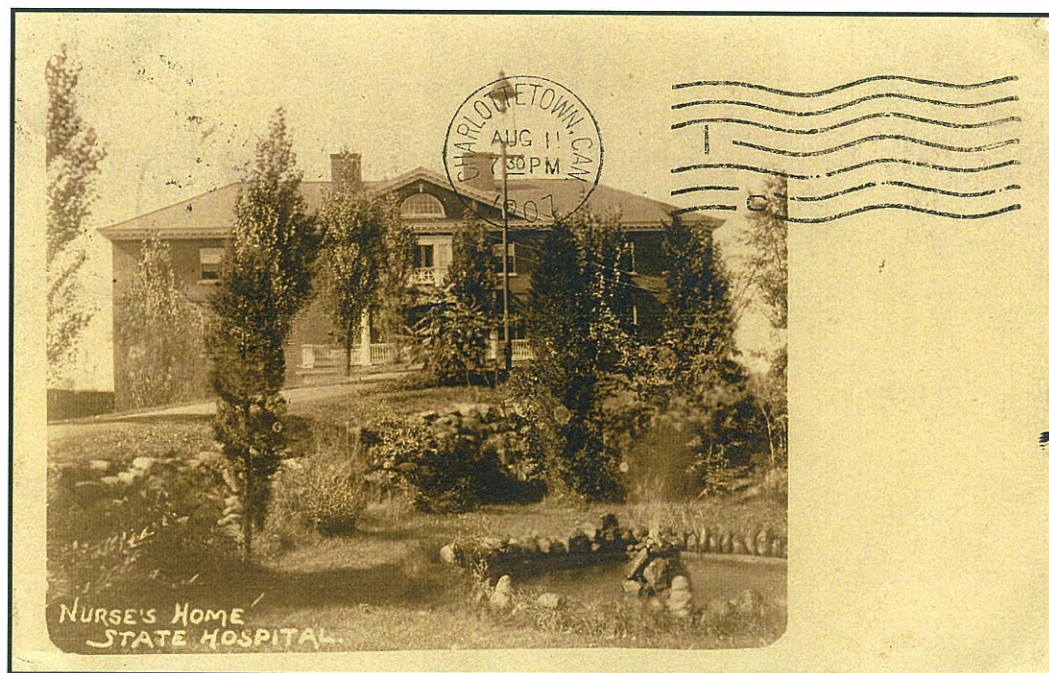
Nurses Home at the State Infirmary, circa 1914.



The Bancroft building at the State Infirmary, circa 1908.



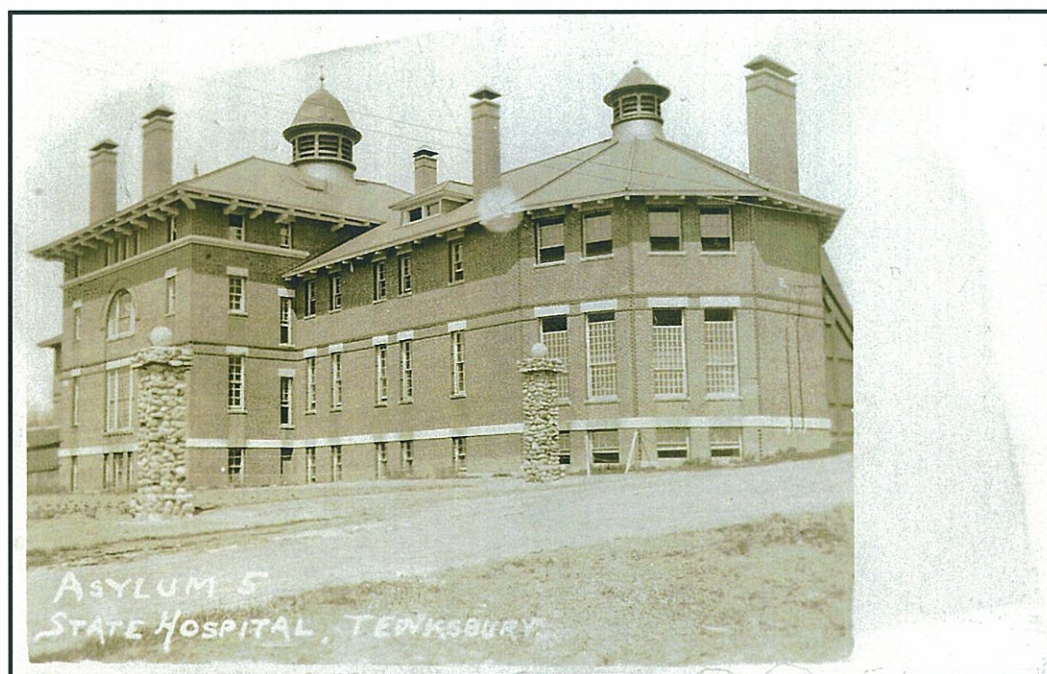
Another view of the Bancroft building at the State Infirmary, circa 1914.



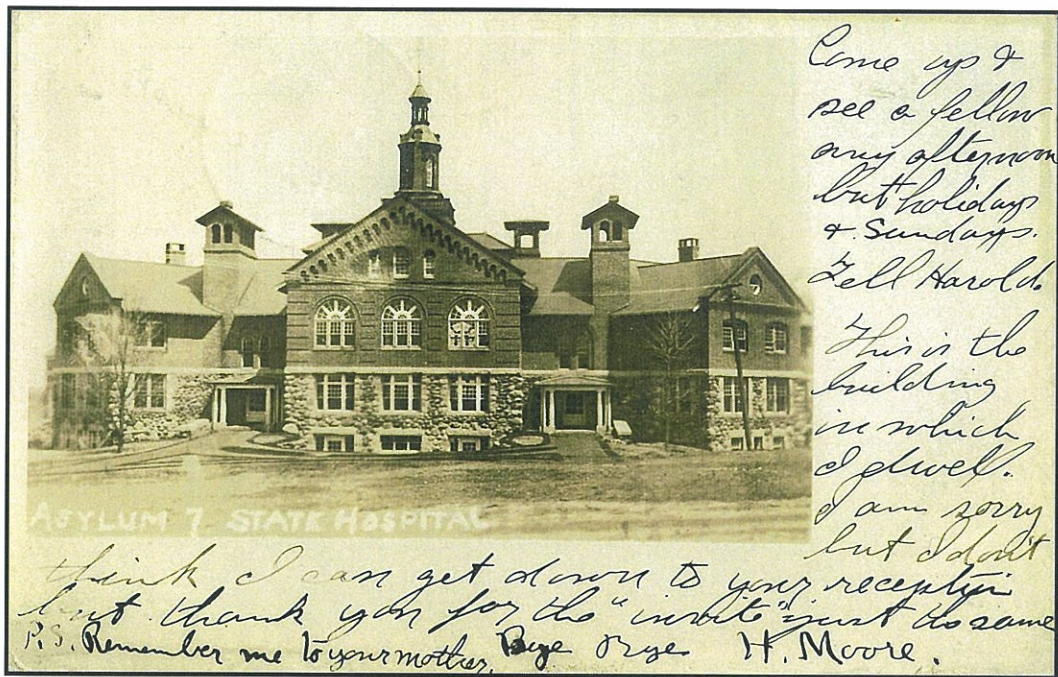
Nurses Home at the State Infirmary, postmarked on August 11, 1907.



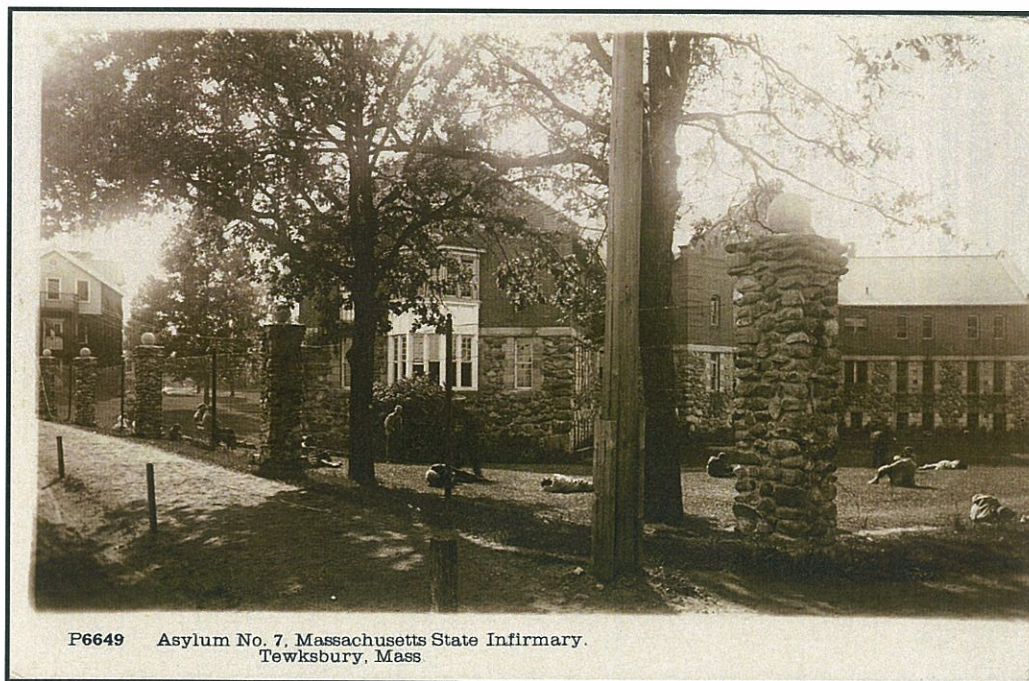
A view across the State Infirmary campus, circa 1907.



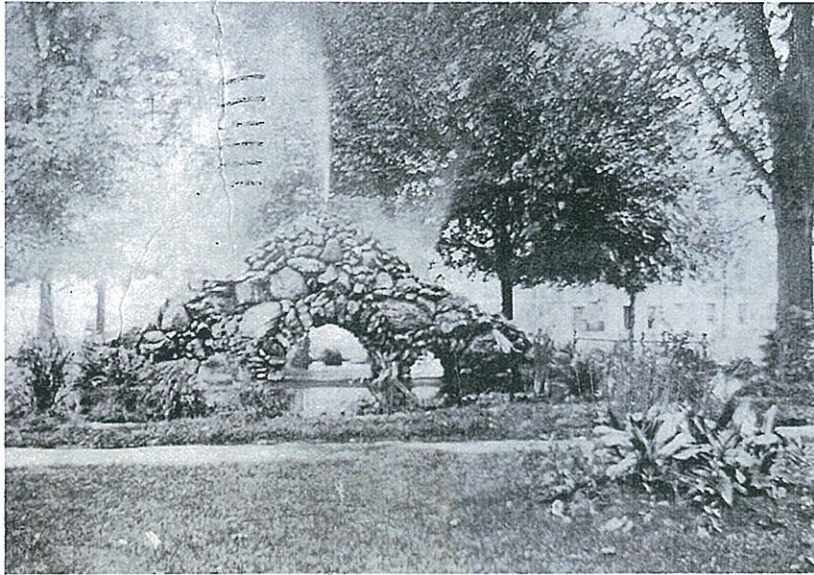
Asylum 5 at the State Infirmary, circa 1907.



Asylum 7 at the State Infirmary, circa 1907.



A view of patients resting in front of Asylum 7 at the State Infirmary, circa 1913.



Fountain at State Infirmary, Tewksbury, Mass.

Another view of a fountain at the State Infirmary, circa 1913.

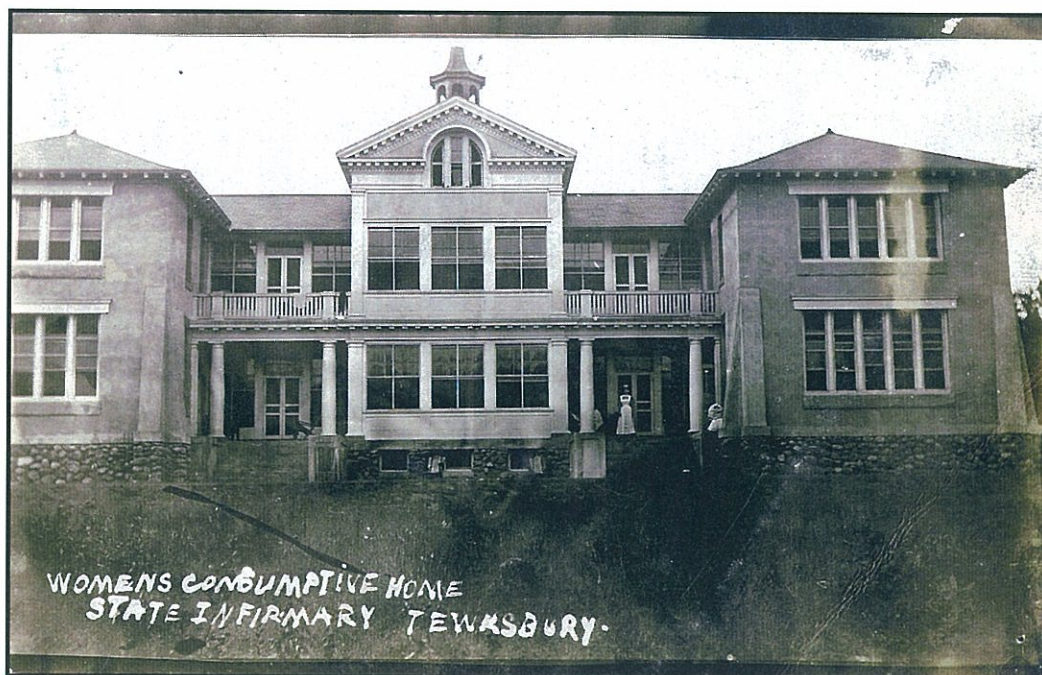


STATE INFIRMARY, FISK HOSPITAL, TEWKSBURY, MASS.

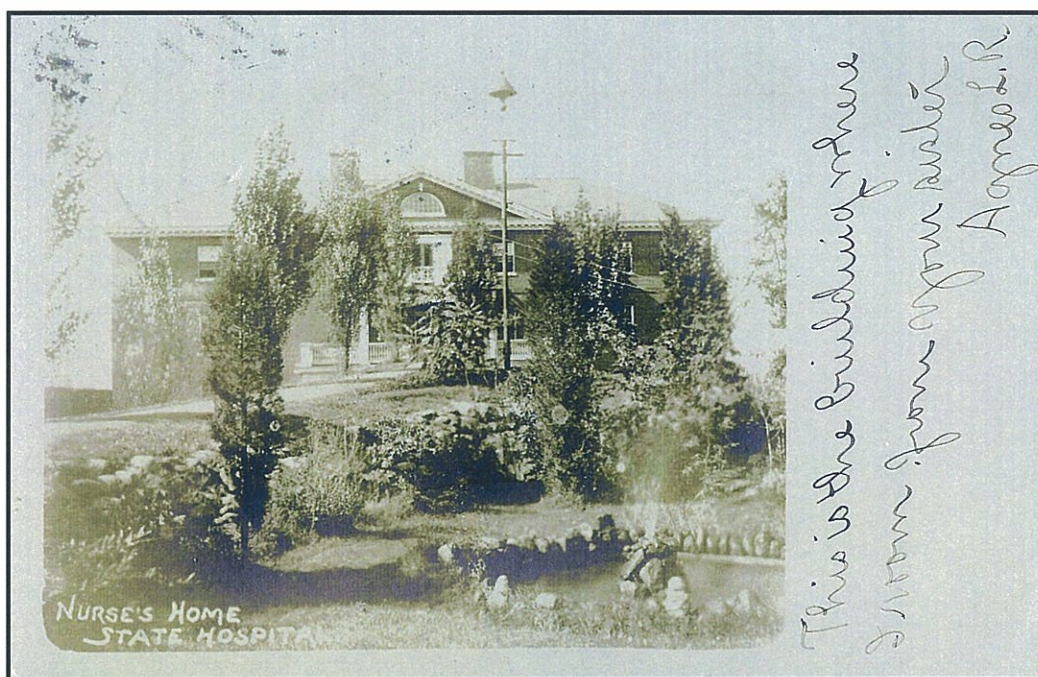
The Fisk Hospital also known as the Women's Consumptive Home at the State Infirmary, circa 1914.



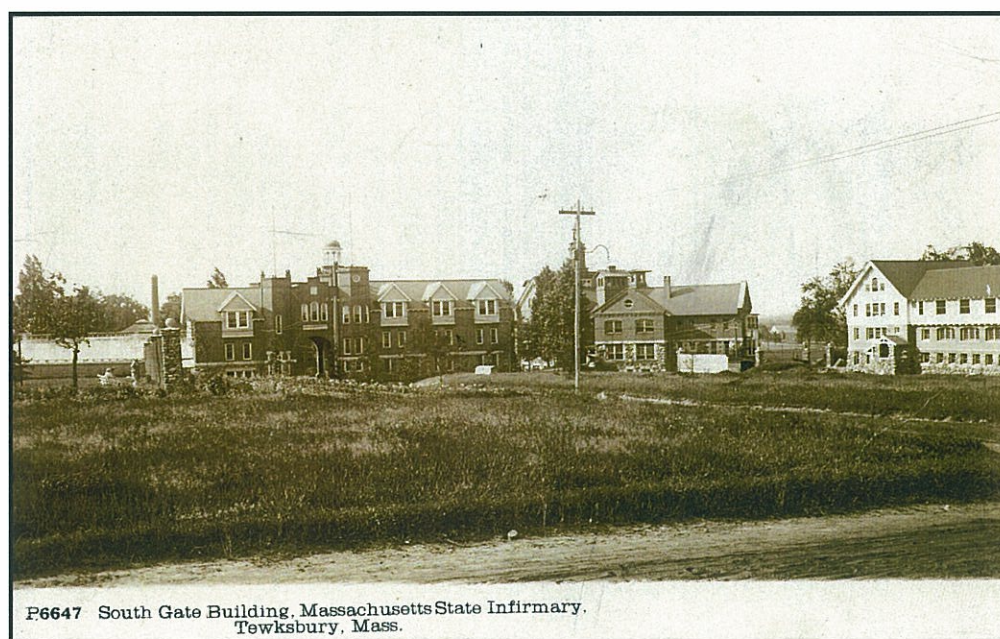
The Center Walk of the State Infirmary, circa 1914.



Another view of the Fisk Hospital on the grounds of the State Infirmary, circa 1908.



Nurses Home with note “This is the building where I room, from your sister Agnes” circa 1907.



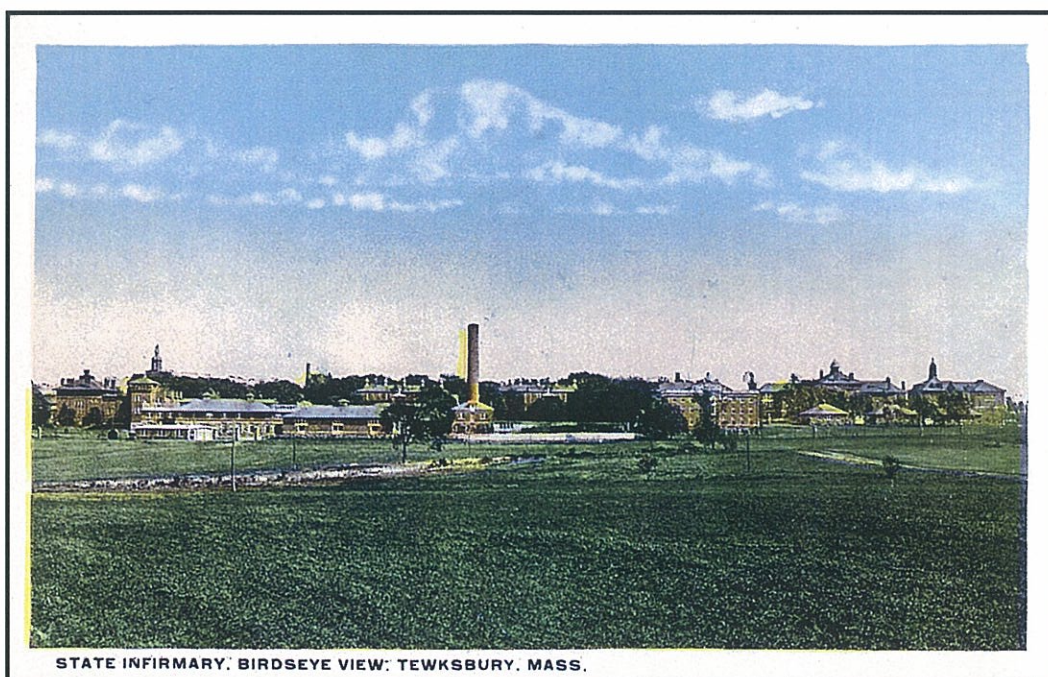
South Gate of the State Infirmary, circa 1913.



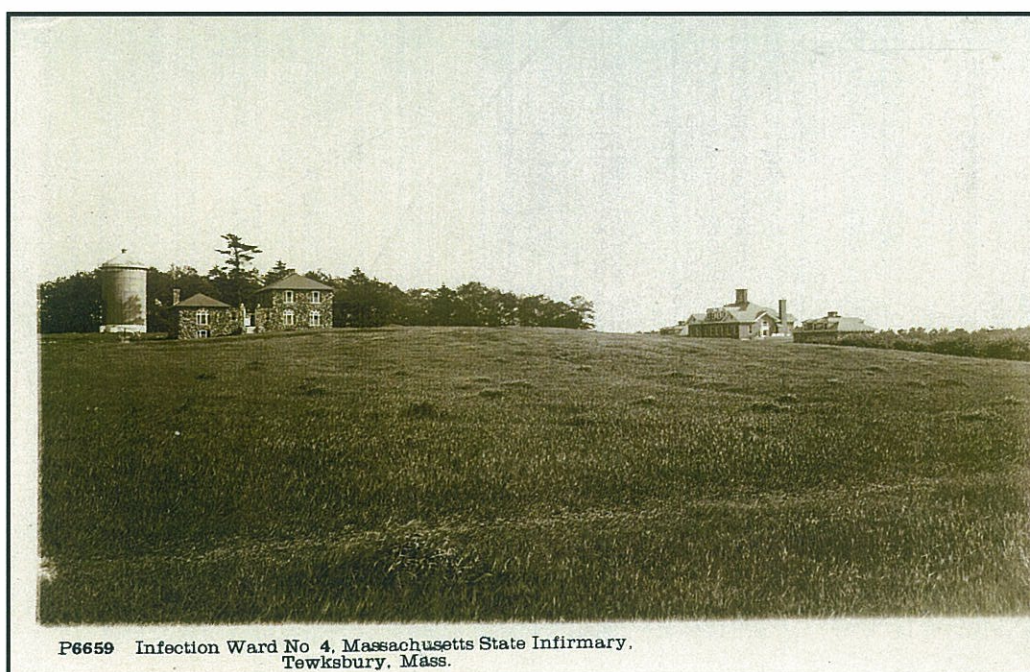
South Gate of the State Infirmary, circa 1907.



Another view of the South Gate at the State Infirmary, circa 1914.



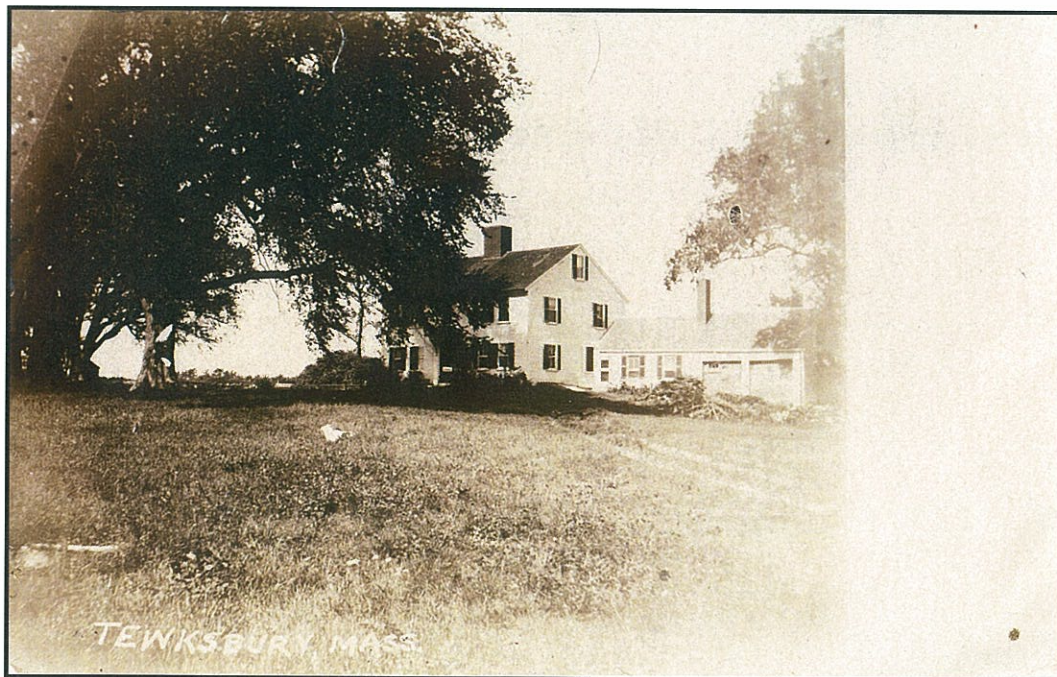
Another view looking east across the fields towards the State Infirmary, circa 1914.



Infection Ward 4 at the State Infirmary, circa 1913.



The Chapman homestead was built in 1790 and is located on East Street, circa 1907.



The Bridges Homestead, destroyed by fire in 1916 was built in 1745, circa 1907.



Crosby's Grove was located along Whipple Road near the current day DPW, circa 1906.



The Brown Street Bridge in Tewksbury, circa 1914.



Shawsheen River in Tewksbury, circa 1907.



Another image believed to have been taken along Whipple Road, circa 1907.



Shawsheen River Bridge in Tewksbury, circa 1907.



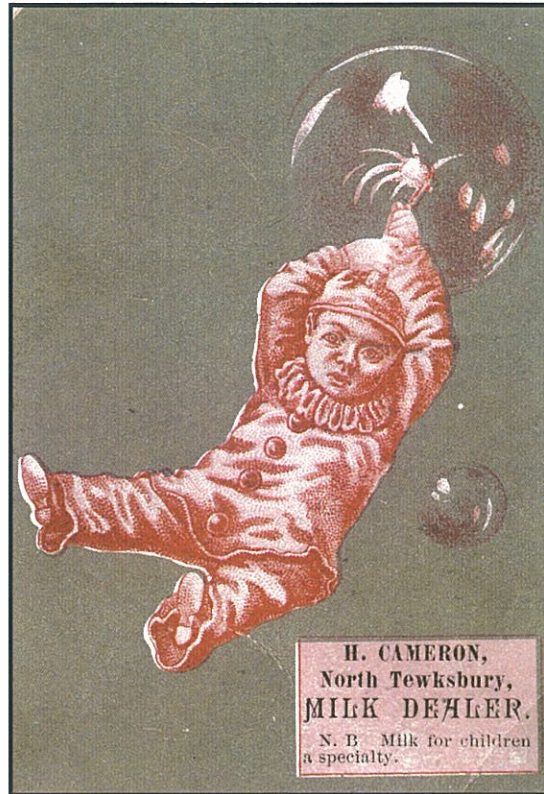
A farm in West Tewksbury, circa 1907.



An early view along one of our local streets, note the trolley tracks on the left, circa 1909.



This dam on the Ames Estate holds back the waters of Ames Pond, circa 1906.



Although not a postcard, this interesting Victorian trading card advertises H. Cameron, North Tewksbury Milk Dealer, circa 1890.



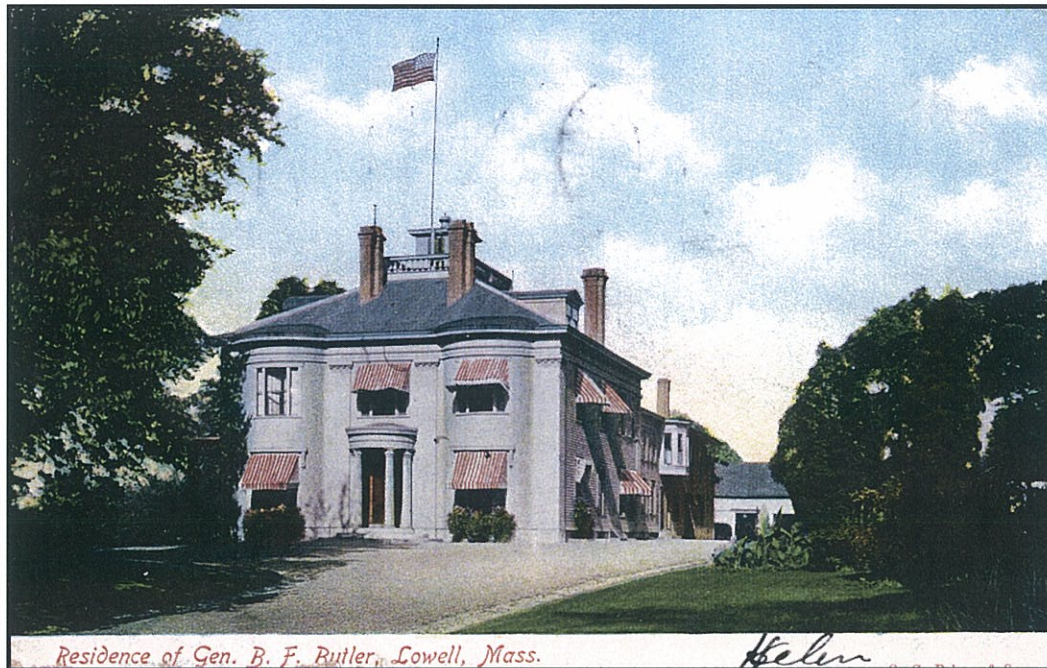
Happy Helen's was located along Main Street in the 1930's and 1940s.



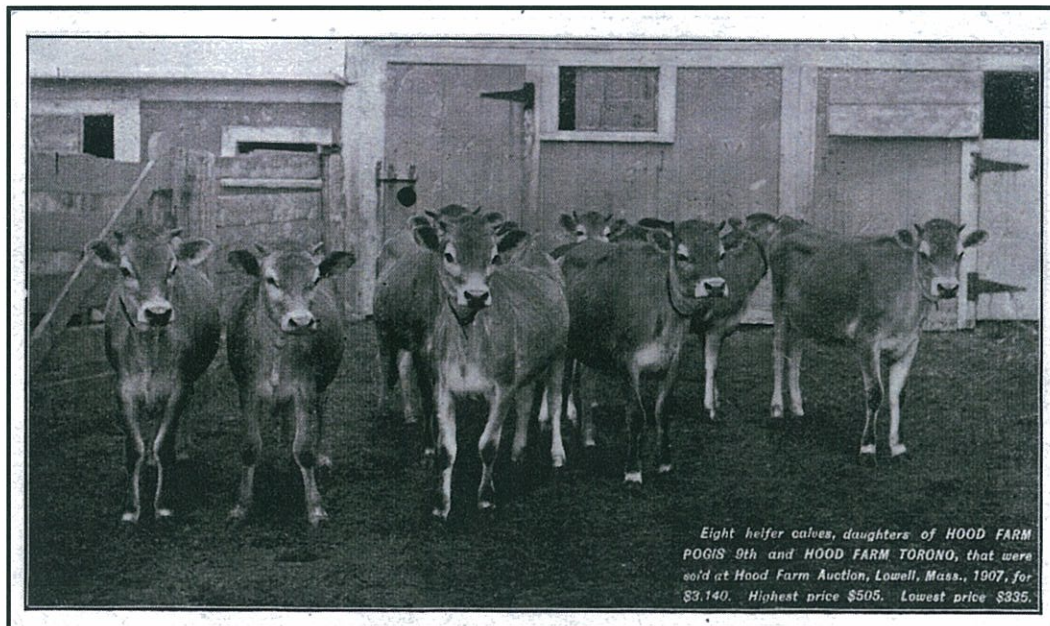
Silver Lake was a popular destination located on the Tewksbury and Wilmington town line, circa 1910.



Another view of Silver Lake, circa 1914.



General Benjamin F. Butler was fond of telling residents that he lived in both Lowell and Tewksbury. At one time the town line did in fact pass between the mansion and stables, but it was only the horses that slept in our small town, circa 1906.



The Hood Farm was located along River Road in both Tewksbury and Andover, circa 1908.

Tewksbury Historical Society
www.tewksburyhistoricalsociety.org